



# SOCIETY FOR WOMEN'S HEALTH RESEARCH GALA

## SWHR 36TH ANNUAL AWARDS DINNER

SUPPORT • CONNECT • CELEBRATE

### JOIN US FOR AN EVENING TO REMEMBER!

---

Thursday, April 16, 2026

Networking Reception 6:00 p.m. ET  
Dinner and Award Presentations 7:00 p.m.

Fairmont Washington D.C. Georgetown  
2401 M St NW, Washington, D.C. 20037



#### ABOUT THE SOCIETY FOR WOMEN'S HEALTH RESEARCH

Our mission is to advance women's health through science, policy, and education while promoting research on sex differences to optimize women's health. Learn more at: [swhr.org/about](https://swhr.org/about).

#### ABOUT THE ANNUAL AWARDS GALA

The SWHR Annual Awards Gala is the premier social event of the spring, bringing together influential leaders from health care, research, and policy in Washington, D.C. This is your chance to network with key stakeholders, honor the remarkable achievements in women's health, and contribute to our vision of *making women's health mainstream*.

#### INVITATION TO SPONSOR

We invite you to join us as a key partner for the 2026 Annual Awards Gala, celebrating 36 years of groundbreaking advancements in women's health. Your support is not simply a donation; it is a strategic investment in the future of an industry poised for exponential growth. By sponsoring this event and honoring champions in women's health research, your brand will gain significant exposure to an influential and committed audience, including:

- Researchers and innovators, pushing the boundaries of discovery.
- Key policymakers and advocates, shaping the future of health care legislation.
- Leading decision-makers from the pharmaceutical, fem-tech, and commercial sectors, actively seeking new collaborations.

Your participation in our Annual Awards Gala is more than just an event; it's a commitment to empowering women and ensuring their representation in clinical trials and health care decisions. Together, we can continue to champion the vital role of women as health advocates for themselves, their families, and their communities.

# SPONSORSHIP LEVELS & BENEFITS

## VISIONARY — \$150,000

- Networking reception and two front-row tables of 10
- Additional reserved seat at head table
- Special recognition as a Visionary Sponsor from the podium
- Full-page ad in event program — choice of inside front cover or inside back cover
- Dedicated page in the slide loop on screens before and during event
- Listing as a Visionary Sponsor on website, invitations, & event program
- Photo opportunity with guest speakers and honorees
- Opportunity to welcome guests from the podium
- Inclusion on step and repeat logo display
- Personalized event social media toolkit
- 25% discount on optional add-on sponsorships (see below)
- Special invitation to one of SWHR's Clinical Advisory Board Meetings
- Complimentary 2026 membership to [SWHR's Policy Advisory Council](#) or the [Coalition to Advance Maternal Therapeutics](#)

## PIONEER — \$100,000

- Networking reception and premier seating for one table of 10
- Special recognition as a Pioneer Sponsor from the podium
- Full-page ad in event program, premier placement
- Dedicated page in the slide loop on screens before and during event
- Listing as Pioneer Sponsor on website, invitations, & event program
- Photo opportunity with guest speaker and honorees
- Inclusion on step and repeat logo display
- Special invitation to one of SWHR's Clinical Advisory Board Meetings.
- Personalized event social media toolkit
- 20% discount on optional add-on sponsorships (see below)

## INNOVATOR — \$75,000

- Networking reception and priority seating for one table of 10
- Special recognition as an Innovator Sponsor from the podium
- Full-page ad in event program, priority placement
- Dedicated page in the slide loop on screens before and during event
- Listing as Innovator Sponsor on website, invitations, & event program
- Inclusion on step and repeat logo display
- Personalized event social media toolkit
- 10% discount on optional add-on sponsorships (see below)

## CHAMPION — \$50,000

- Networking reception and reserved seating for one table of 10
- Special recognition as a Champion Sponsor from the podium
- Full-page ad in event program
- Listing as Champion Sponsor in the slide loop on screen before and during event
- Listing as Champion Sponsor on website, invitations, & event program
- Personalized event social media toolkit

## PARTNER — \$25,000

- Networking reception and seating for one table of 10
- Special recognition as a Partner Sponsor from the podium
- Half-page ad in the event program
- Listing as Partner Sponsor in the slide loop on screen before and during event
- Listing as Partner Sponsor on website, invitations, & event program

## ADVOCATE — \$15,000

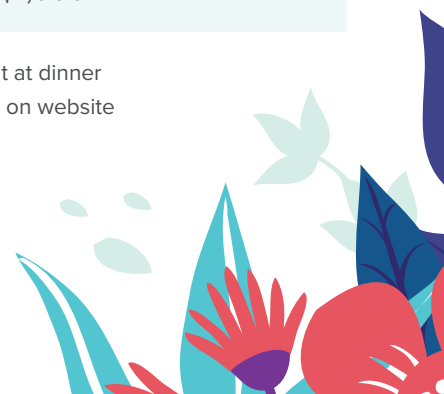
- Networking reception and seating for one table of 10
- Special recognition as an Advocate Sponsor from the podium
- Listing as Advocate Sponsor in the slide loop on screen before and during event
- Listing as Advocate Sponsor on website, invitations, & event program

## FRIEND — \$6,000

- Networking reception and seating for five people
- Listing as Friend Sponsor in the slide loop on screen before and during event
- Listing as Friend Sponsor on website, invitations, & event program

## INDIVIDUAL TICKET — \$1,000

- Networking reception and seat at dinner
- Listing as Individual Supporter on website



# CUSTOMIZED SPONSORSHIPS

## Partner with SWHR for an Unforgettable Gala Experience



Becoming a Gala sponsor is more than a donation; it's a partnership that amplifies your brand's presence while directly impacting women's health. We offer custom, high-visibility opportunities to showcase your commitment to our community before, during, and after the Annual Awards Gala.

To reserve a custom sponsorship that aligns with your organization's philanthropic goals, please reach out to us.

*Please note that all custom sponsorships are available exclusively to our valued "Friend" level sponsors and above.*

### **CRAFT AN UNFORGETTABLE BRAND EXPERIENCE AS A NETWORKING RECEPTION SPONSOR**

\$6,000

*Exclusive Opportunity*

Elevate your brand to an art form. As an exclusive sponsor of a key element of the Gala's networking reception, your company will be featured as the force behind a premium experience of cocktails, hors d'oeuvres, and conversation. Your logo will be prominently placed on signage throughout the reception, creating a personal association with a memorable part of the evening.

This sponsorship allows you to demonstrate your brand's unique identity and style to influential attendees. Your generous support directly funds critical advocacy in women's health research, aligning your brand with a cause that is vital and deeply respected.

Elevate the Experience (optional, provided by sponsor): To further engage attendees, you may provide custom-branded items related to the sponsored element such as branded napkins or glasses.

### **'KNOW BEFORE YOU GO' EMAIL SPONSORSHIP**

\$5,000

*Exclusive Opportunity*

Get your brand in front of every guest with this unique pre-event marketing opportunity. As the exclusive sponsor of the two final attendee communications, your brand will be showcased to our entire Gala audience. Your \$5,000 sponsorship covers:

- Prominent logo placement in two official "know before you go" Gala emails.
- A personalized message from your brand, visible to hundreds of engaged attendees.\*
- This sponsorship creates impact that lasts. Your contribution directly supports SWHR's mission to advance women's health research, positioning your organization as a key partner in our success.

*\*Please note that personalized message may not be an advertisement of a specific product or service.*

### **SPONSOR OUR BLOOMS OF HOPE: FLORAL SPONSORSHIP FOR THE GALA**

\$5,000

*Exclusive Opportunity*

Showcase your company's commitment to women's health by aligning your brand with the beauty and grace of the Gala's floral arrangements. This exclusive opportunity includes prominent display of your brand at each lovely centerpiece.

## CUSTOMIZED SPONSORSHIPS (cont.)

### THE MOMENT OF CELEBRATION: SPONSOR THE GALA'S CLOSING TOAST

\$5,000

*Exclusive Opportunity*

Align your brand with the evening's most celebratory moment. As an exclusive sponsor, your brand will receive prominent recognition during the closing toast, connecting your company directly to the positive energy and success of the Gala. This high-impact moment will be seen and appreciated by every attendee. Your support elevates a moment of pure celebration, emphasizing your company's commitment to honoring leaders in women's health. You'll make a powerful statement by toasting our honorees' achievements alongside the entire room, positioning your brand as a dedicated to making women's health mainstream.

### BE A PART OF OUR GALA STORY: SPONSOR THE RECAP EMAIL

\$5,000

*Exclusive Opportunity*

The Gala may be over, but the celebration of our collective success continues in our recap email. Your exclusive sponsorship ensures your brand is a central part of this success story, with premium placement in the email sent to all 12,000+ of our email contacts. You'll not only reach our entire list but also associate your brand with the inspiring moments of the evening. Your investment amplifies our mission's message, reaching beyond attendees to a broader audience. This sponsorship positions your company as an ally of the women's health community, reinforcing your positive image to thousands who follow the Society's progress.

### INVEST IN AN INNOVATOR! SPONSOR A WORKING GROUP MEMBER TO ATTEND OUR ANNUAL GALA

\$2,000

At the heart of over three decades of progress in women's health are the passionate researchers and patient advocates who volunteer their time with SWHR to make our work possible. They are the engine of our mission but often work behind the scenes.

Our Annual Awards Gala is a special night they get to shine—a unique opportunity to celebrate their achievements, network with industry leaders, and find inspiration for the challenges and opportunities ahead. But for many, the cost of travel and a ticket is prohibitive. This is your chance to directly and tangibly support one of these dedicated individuals. By sponsoring a working group member for \$2,000, you will give them a seat at the table (literally) with the very people who can amplify their work and turn discoveries into real-world impact. This is an opportunity to make a personal investment in the next big idea in women's health. Your support can launch a career and change countless lives.

### STEP AND REPEAT LOGO DISPLAY

\$2,000

Your brand will be on display at the Gala and memorialize in all Gala photos. Display your brand on the step and repeat! *Five step and repeat sponsorships available. Reserve yours now.*



**Join us in celebrating 36 years of progress and making a lasting impact on women’s health.**

**The 2024 and 2025 Galas were sold-out, so secure your tables and tickets today!**

**Thank you for your support!** Your donation and sponsorship of any amount is an investment in the Society for Women’s Health Research to continue our mission of advancing women’s health through science, policy, and education while promoting research on sex differences to optimize women’s health. To learn more about the programs your donation will support, go to [www.swhr.org](http://www.swhr.org).

Please visit SWHR’s [Code of Conduct](#) and [Gift Acceptance Policy](#).

Company / Affiliation \_\_\_\_\_

First Name \_\_\_\_\_ Last Name \_\_\_\_\_

Title \_\_\_\_\_

Email \_\_\_\_\_

Phone \_\_\_\_\_

Street Address 1 \_\_\_\_\_

Street Address 2 \_\_\_\_\_

City \_\_\_\_\_ State \_\_\_\_\_

Zip Code \_\_\_\_\_ Country \_\_\_\_\_

**Please reserve the following Sponsorships:**

- Visionary..... \$150,000
- Innovator .....\$75,000
- Partner..... \$25,000
- Friend .....\$6,000
- Pioneer..... \$100,000
- Champion.....\$50,000
- Advocate ..... \$15,000
- Individual ticket..... \$1,000

**Additional Sponsorships:**

- Networking Reception.....\$6,000
- Pre-Gala ‘Know Before You Go’ Emails.....\$5,000
- Floral Arrangements.....\$5,000
- Closing Ceremony Champagne Toast .....\$5,000
- Post-Gala Wrap-Up Email .....\$5,000
- Working Group Member Sponsorship.....\$2,000
- Step and Repeat Logo Display .....\$2,000

**Payment Options — I will be paying by:**

- Check
- Wire Transfer
- Invoice
- Credit Card

**Credit card payment can be made online at:**

Pledge your commitment and reserve your sponsorship [online](#).

*There is 3% transaction fee for credit card payments.*

**Checks payable to:**

Society for Women’s Health Research  
 SWHR Awards Dinner  
 ATTN: Development Office  
 1025 Connecticut Avenue NW,  
 Suite 1104 • Washington, DC 20036

**Wire transfer payment:**

Eagle Bank  
 Society for Women’s Health Research  
 A/No 10015600 Routing No 055003298  
 1228 Connecticut Avenue  
 NW Washington, DC, 20036  
 Office: 202-292-1630

**For additional information, please contact:**  
 For additional information, please contact our Development Team at [development@swhr.org](mailto:development@swhr.org).